

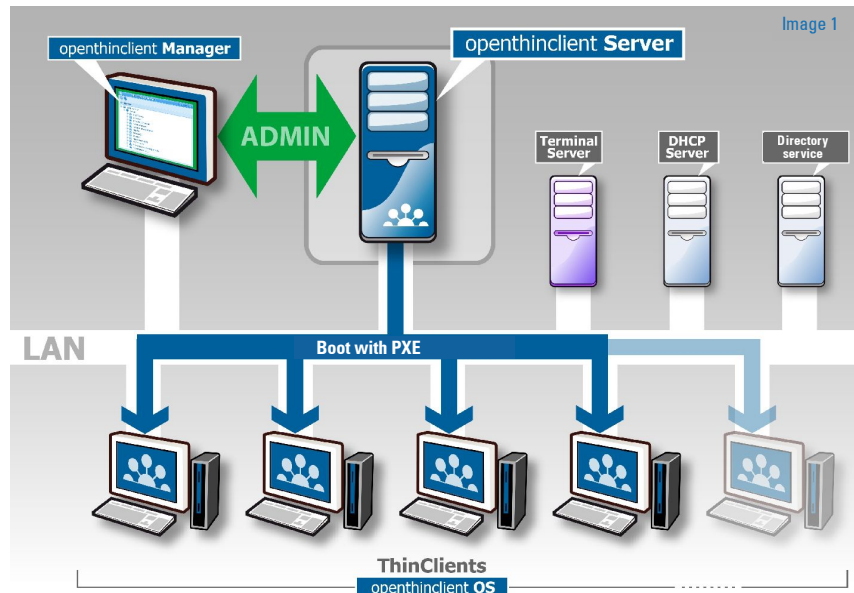
Management-Server



Applications

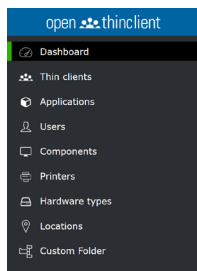
- Chromium Browser
- Citrix Workspace Client
- FreeRDP Client
- Rdesktop RDP Client
- Microsoft Teams
- Zoom
- Localboot
- VNC
- Command application

The openthinclient Management Server is an all-round software solution for easy administration and reliable operation of thin clients. The management server includes the graphical administration interface, the necessary server services and databases, as well as the client operating system based on Linux.

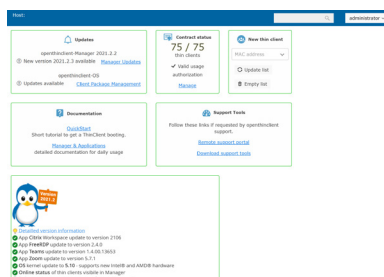


openthinclient Manager

Main menu



Dashboard



openthinclient Management Server

The openthinclient Management Server is the central server component that provides all network services, databases, program files and configurations to centrally manage and boot thin clients over the network.

The following services are integrated in the openthinclient Management Server:

- DHCP proxy (listens for DHCP requests on the network and sends boot information)
- TFTP (provides boot files)
- NFS/Port mapper (makes files and apps available for thin clients)
- LDAP (stores all settings and mappings)
- Syslog (stores logs thin clients)
- Web server (provides the openthinclient manager)

The openthinclient manager is used for the administration of the thin clients. The manager is executed in the browser. This is used to manage the thin clients and to assign applications.

Administration is very simple and straightforward: adding new thin clients to a running environment practically takes only a few seconds. Then the client can be switched on and boots the openthinclient OS and starts the applications according to its settings in the openthinclient Manager.

The following administration levels structure the openthinclient manager:

- Thin clients (add and manage the actual devices)
- Applications (the programs executable on the clients)
- User (when connected to AD)
- Components (specific settings for e.g. displays, keyboard, touch screen)
- Printer (assignment of printers)
- Hardware types (basic hardware configurations)
- Locations (e.g. language, time zone)
- Basic settings (updates, usage rights, services, data export/import)

All brand and product names mentioned are trademarks of their respective owners and are hereby recognized. Subject to changes.

System requirements

Thin clients

x86-compatible 64-bit CPU (PAE-capable)

512 MB RAM (recommended: 1 GB)

Network bootable

Management server

1 GB free RAM

64-bit CPU (x86 or AMD)

at least 6 GB disk space

Current Windows or Linux

port releases

Virtual appliance

VMware ESXI or VMware Workstation

or Microsoft Hyper-V

3 GB RAM

20 GB disk space

Requirements

To use openthinclient in your company, the following conditions should be met:

Network (LAN) with DHCP server, if necessary own VLAN if there are other PXE services in the network available

Server (Microsoft Windows or Linux) or alternatively virtualization e.g. VMware to run openthinclient as a virtual appliance.

Thin clients must support PXE boot

Microsoft Terminal Server, Citrix or similar architecture for server-based work

Advantages and possible uses:

Try for free

No additional infrastructure necessary

Central administration of all clients

High scalability with minimal administration

Easy to use

Stable in operation

openthinclient-OS

The openthinclient-OS is based on a Linux operating system (Debian). It allows, through its open architecture and current kernel, the operation of hardware from different thin client manufacturers, standard PCs and numerous peripherals.

The openthinclient OS is booted over the network via PXE. Each client always boots the latest openthinclient-OS version after power-on.

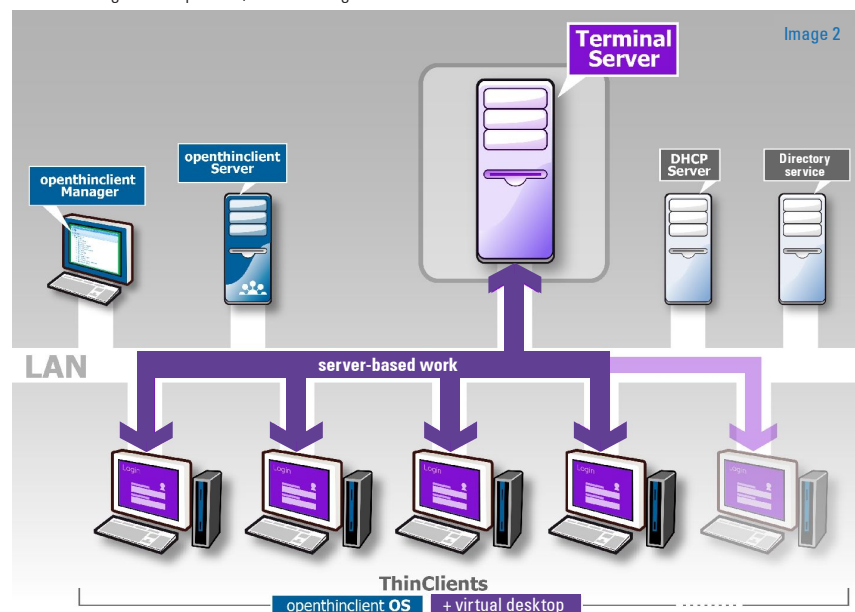
Operating principle

Image 1:

- After switching on the thin client, it "calls" into the network via broadcast. The client then receives an IP address assigned by the DHCP server.
- The Proxy DHCP function of the openthinclient server also „listens“ into the network and sends the boot file after the IP address is assigned.

Picture 2:

- After loading the operating system, an application for server-based work can be started on the thin client. (e.g. RDP client, Citrix Workspace, VMware Horizon, Browser).
- The connection to the terminal server, virtual desktop or cloud application is established and after the registration process, work can begin.



Additional remarks:

- The thin client serves as an input/output unit for keyboard, mouse, screen, USB and is connected via network cable. The applications such as Microsoft Office, email program, SAP etc. are run on the TerminalServer. In the event that a thin client fails, it is replaced by another device; after rebooting, work can be resumed within a few minutes.
- The openthinclient server only serves registered thin clients that have been created in the openthinclient manager. If a network software deployment exists at the same time, PXE requests from other clients are not answered (so-called whitelist method).